

# Bob Mollette

## 3<sup>rd</sup> Ward Councilman

1705 Franklin Blvd.  
Portsmouth, Ohio 45662

Phone: 740-353-0099  
email: [mollette@mollette.info](mailto:mollette@mollette.info)  
website: [www.mollette.info](http://www.mollette.info)

Correspondence#: 08-029

August 11, 2008

Jim Kalb, Mayor  
728 Second Street  
Portsmouth, Ohio 45662

### **Re: Seneca Drive Pavement Repairs and Preventative Maintenance**

I performed a site visit in response to a constituent concern over the degraded asphalt pavement condition on Seneca Drive. I have enclosed photographs to assist proper evaluation and actions to maintain our infrastructure.

It appears the pavement is inverted by design to direct the surrounding property drainage into the center of the street for collection in the storm water catch-basins. The center of the street is indicating wear with potholes which will only continue to worsen without proper attention. Other asphalt piecemeal repair work is showing wear. The catch-basin located at the intersection of Seneca Drive and Sandstone Drive has dropped below the pavement surface by approximately four (4") inches which may be considered a traffic obstacle or hazard. Timely repair of these items will avoid further damage with increased costs and improve safety.

Does the City of Portsmouth have a proactive plan in place to inspect our street infrastructure and schedule routine preventative maintenance to extent the life of our street infrastructure by crack sealing and pothole repairs? If so, please elaborate.

If you have any questions or comments you may contact me.

Respectfully,



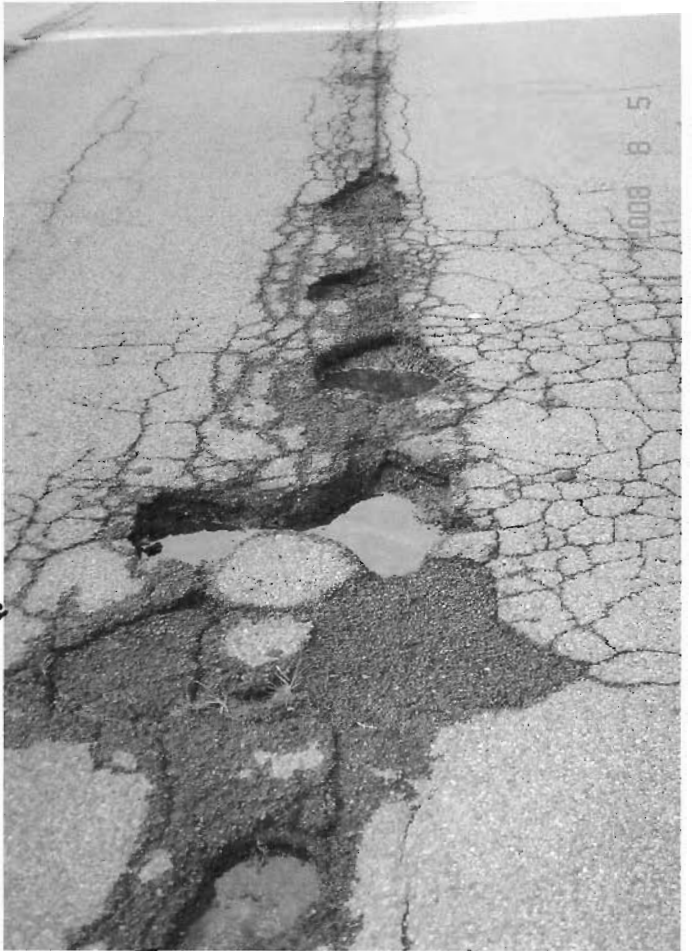
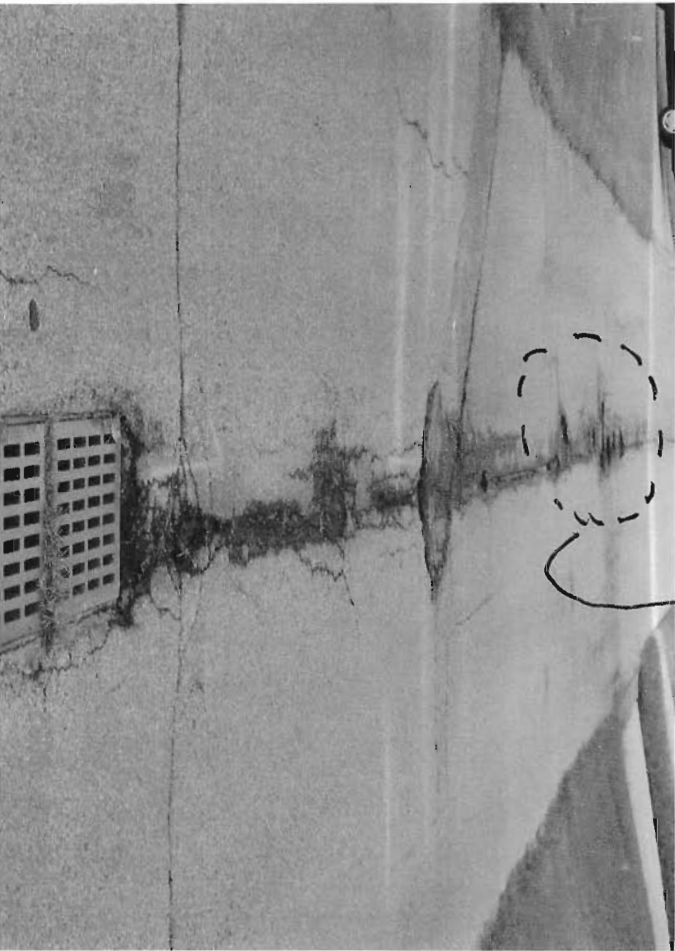
Bob Mollette, 3<sup>rd</sup> Ward Advocate and Representative on City Council

rwm

Enclosure

cc: Milton Wallace @ 3340 Seneca Drive Portsmouth, Ohio 45662  
Bill Beaumont, Engineering Department  
Christopher Murphy, Public Service Director  
Michael Jones, Solicitor  
Trent Williams, Auditor  
Jo Ann Aeh, Clerk (Record)

SENECA DRIVE (LOOKING UPHILL)



ENLARGED VIEW  
SENECA DRIVE (LOOKING UPHILL)

SENECA DRIVE (LOOKING UPHILL)



INTERSECTION @ SENECA DR. and SANDSTONE ST

